

Groupe Lacasse presents Neocase, 100% reconfigurable modular casework. Neocase is engineered to exacting specifications, making it the superior alternative to built-in millwork. In addition to lower ownership and maintenance costs, Neocase offers the most environmentally responsible solution available. It's the smartest possible investment for applications within healthcare environments such as **laboratories, pharmacies, emergency** and **procedure rooms**.

The laboratory environment depicted here exemplifies the customization of lab space with durable modular casework that effectively manages storage, utility, workflow and testing requirements while accommodating future change and growth.





Stainless steel drying rack



Laboratory utility chase



Epoxy resin countertops with backsplash and integral sink



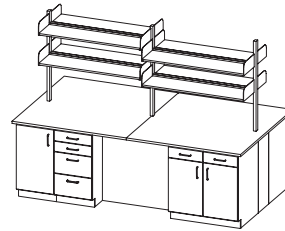
Cabinet with sloped tops and plexiglass doors



Counter-height work surfaces

Neocase modular casework offers unlimited possibilities for making the most of new workspaces and reconfiguring existing ones. Here are some configuration examples:

Collaborative Island



- | | |
|-----------------------------|---|
| Base cabinets - 35"H | <ul style="list-style-type: none"> - Doors - Split drawers and doors - Four drawers - Deep storage drawers - Kick plates 4" (100 mm) |
|-----------------------------|---|

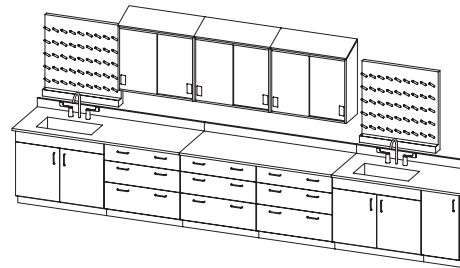
Face panels

Chases

- | | |
|--|----------------------|
| Steel shelving frames and shelves | - Adjustable shelves |
|--|----------------------|

- | | |
|--------------------|---------------|
| Countertops | - Epoxy resin |
|--------------------|---------------|

Integral Sinks & Counter Area



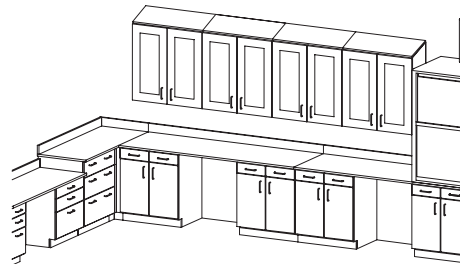
- | | |
|-----------------------------|--|
| Base cabinets - 35"H | <ul style="list-style-type: none"> - Sink bases - Three drawers - Doors - Drawers and doors - Kick plates 4" (100 mm) |
|-----------------------------|--|

- | | |
|------------------------------|--|
| Wall-mounted cabinets | <ul style="list-style-type: none"> - Sloped tops - Sliding doors |
|------------------------------|--|

- | | |
|--|---------------|
| Countertops, backsplashes and sinks | - Epoxy resin |
|--|---------------|

- | | |
|--------------------|--|
| Accessories | <ul style="list-style-type: none"> - Drying rack - Faucet - Deck-mounted eye washes |
|--------------------|--|

Hood Area & Storage Cabinets



- | | |
|-----------------------------|--|
| Base cabinets - 35"H | <ul style="list-style-type: none"> - Doors - Split drawers and doors - Three drawers - Adjustable shelves - Kick plates 4" (100 mm) |
|-----------------------------|--|

- | | |
|------------------------------|--|
| Wall-mounted cabinets | <ul style="list-style-type: none"> - Sloped tops - Translucent doors |
|------------------------------|--|

Face panels

- | | |
|-------------------------------------|---------------|
| Countertops and backsplashes | - Epoxy resin |
|-------------------------------------|---------------|