

MOMENTUM
TEXTILES

united chair®



CANTER CITRUS
MT0950



SUMMER WHITE
MT0959



SAND DOLLAR
MT0958



ADOBE
MT0948



BLUSH GREY
MT0949



SABLE
MT0177



IRON
MT0761



FOLKSTONE GREY
MT0952



SADDLE
MT0178



RED
MT0957



SAFARI
MT0179



TWILIGHT
MT0961



ONYX
MT0176



KNACK WAVE
MT0382



FILAMENT
MT0376



ZEST
MT0383



FRESCO
MT0377



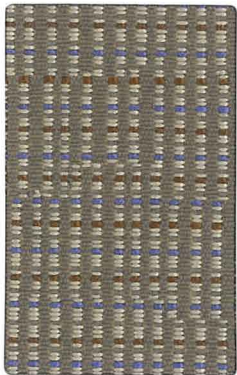
BRISK
MT0373



DARK ROAST
MT0375



CARBON
MT0374



DART ASH
DA01



INK
DA05



CARMINE
DA03



SLATE
DA07



GEODE
DA06



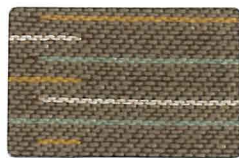
CADET
DA02



EBONY
DA04



JOT BALTIC
JO01



FOSSIL
JO02



SCARLET
JO04



SHADOW
JO05



ONYX
JO03



ORIGIN GAIA
MT0423



CARAWAY
MT0418



EUREKA
MT0420



POPPY
MT0432



MIKAN
MT0430



SAPPHIRE
MT0433



IRON
MT0426



ARUNDEL
MT0413



INDIGO
MT0425



EURO
MT0421



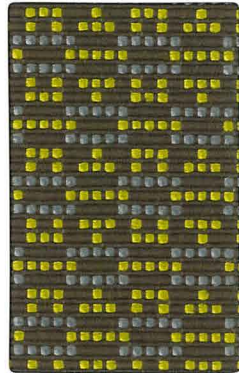
GARNET
MT0424



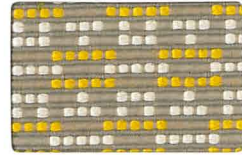
STATELY
MT0435



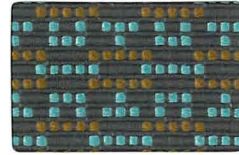
JET
MT0427



BOBBY MOSS
BY07



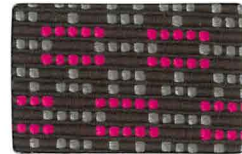
LEMON
BY06



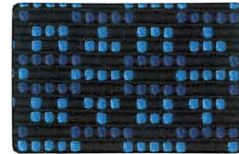
AQUA
BY02



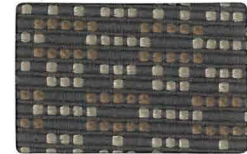
GLOW
BY04



FUCHSIA
BY03



IRIS
BY05



ANCHOR
BY01



BRAVO II CINDER
MT0844



RANCH
MT0852



HEMATITE
MT0847



TWILIGHT
MT0856



OUTBACK
MT0781



MICA
MT0849



IRON
MT0848



SADDLE
MT0853



DRIFTWOOD
MT0778



DUSK
MT0846



NIGHT
MT0850



BARK
MT0963



BLACK
MT0843



HUE QUARRY
HU28



DANDELION
HU02



FROTHE
HU19



STEM
HU31



TROPIC
HU26



COCOA
HU17



CHAR
HU16



LATTE
HU22



SEAPORT
HU29



INDIGO
HU07



CHIPOTLE
HU12



GRAPE
HU09



BLACK
HU13

TECHNICAL INFORMATION

INFORMATIONS TECHNIQUES

Width - Pattern	Fiber Content	Finish	Abrasion (D.R.)	Lightfastness
54° BOBBY ☛ [A] ☀ ☘ ☆*	68% Repreve® Post Consumer Recycled Polyester, 32% Polyester		150,000	40 Hours Class 3.5
56° DART ☛ [A] ☀ ☘ ☆*	89% Repreve® Post Consumer Recycled Polyester, 11% Polyester		102,000	40 Hours Class 5
54° HUE ☛ [A] ☀ ☘ ☆*	65% Post Industrial Recycled Polyester, 35% Post Consumer Recycled Polyester	Teflon®	1,000,000	60 Hours Class 4.5
56° JOT ☛ [A] ☀ ☘ ☆*	100% Repreve® Post Consumer Recycled Polyester		100,000	40 Hours Class 4.5
54° KNACK ☛ [A] ☀ ☘ ☆*	100% Post Consumer Recycled Polyester	Soil & Stain Resistant	100,000	40 Hours Class 5
58° ORIGIN ☛ [A] ☀ ☘ ☆*	100% Post Consumer Recycled Polyester	Soil & Stain Resistant	282,000	40 Hours Class 4
54° BRAVO II ☛ [A] ☀ ☘	100% Polyurethane / PVC Free	Antimicrobial, Antibacterial	500,000	200 Hours Class 4.5
54° CANTER ☛ [A] ☀ ☘	100% Polyurethane / PVC Free	Antimicrobial, Antibacterial	240,000	200 Hours Class 4.5
Largeur - Patron	Teneur en fibres	Fini	Abrasion (D.F.)	Résistance à la lumière
54° BOBBY ☛ [A] ☀ ☘ ☆*	68 % Polyester postconsommation, 32 % Polyester		150 000	40 Heures Classe 3,5
56° DART ☛ [A] ☀ ☘ ☆*	89 % Polyester recyclé postconsommation, 11 % Polyester		102 000	40 Heures Classe 5
54° HUE ☛ [A] ☀ ☘ ☆*	65 % Polyester recyclé postindustriel, 35 % Polyester recyclé postconsommation	Teflon®	1 000 000	60 Heures Classe 4,5
56° JOT ☛ [A] ☀ ☘ ☆*	100 % Polyester recyclé postconsommation		100 000	40 Heures Classe 4,5
54° KNACK ☛ [A] ☀ ☘ ☆*	100 % Polyester recyclé postconsommation	Antitache	100 000	40 Heures Classe 5
58° ORIGIN ☛ [A] ☀ ☘ ☆*	100 % Polyester recyclé postconsommation	Antitache	282 000	40 Heures Classe 4
54° BRAVO II ☛ [A] ☀ ☘	100 % Polyuréthane / sans PVC	Antimicrobien, antibactérien	500 000	200 Heures Classe 4,5
54° CANTER ☛ [A] ☀ ☘	100 % Polyuréthane / sans PVC	Antimicrobien, antibactérien	240 000	200 Heures Classe 4,5

*ACT® Registered Certification Marks

Carded program/programme carté = 5 years/ans

COM/COV not under warranty

COM/COV non couvert par la garantie



(Excludes Canter & Bravo II)



(Exclus Canter et Bravo II)



For memo samples, please contact ...
Pour des échantillons, s.v.p. contactez ...



99 St. Pierre, Saint-Pie (Quebec), Canada JOH 1W0

888.522.2773 • www.grounelacasse.com

Printed in the United States.

Information contained herein is subject to change without notice.

MOMENTUM
TEXTILES

800-366-6839

memosamples.com

4212
GL445-0
6/17
1.5M